

RODECaster Pro II

RADIOBOSS MIDICONTROL SETUP GUIDELINES | PC

STEP 1

Enable MIDI Control From
your RODECaster Pro II
settings. To do this, go to:
Settings> System> MIDI>
MIDI Control

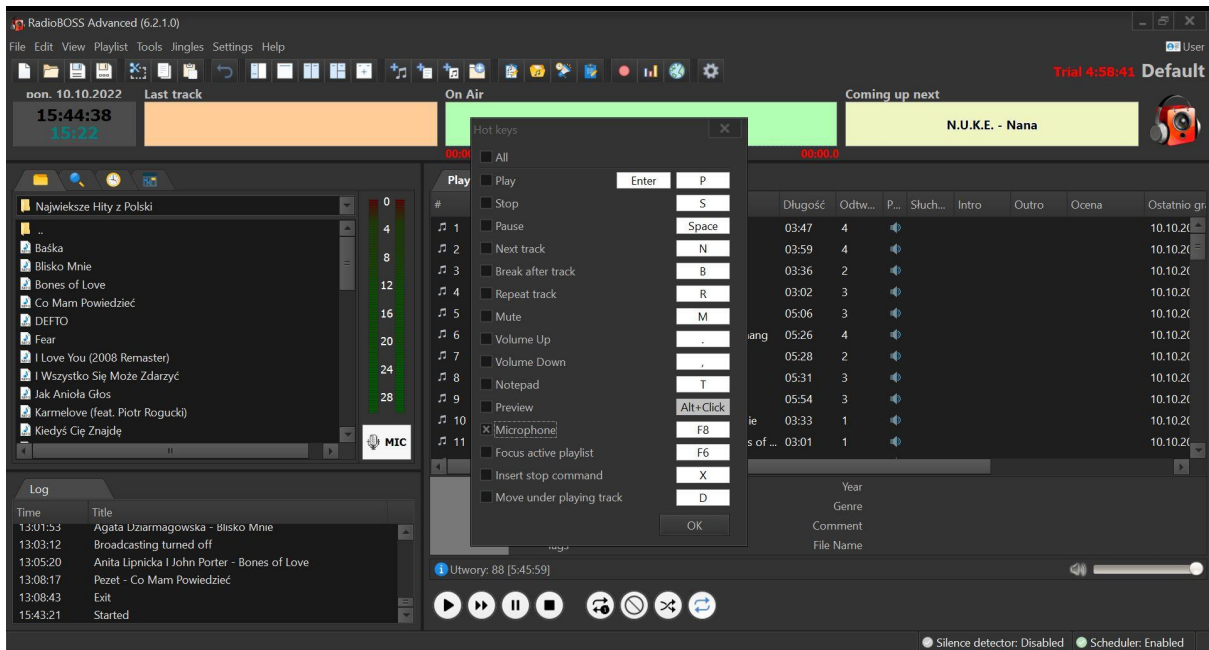




STEP 2

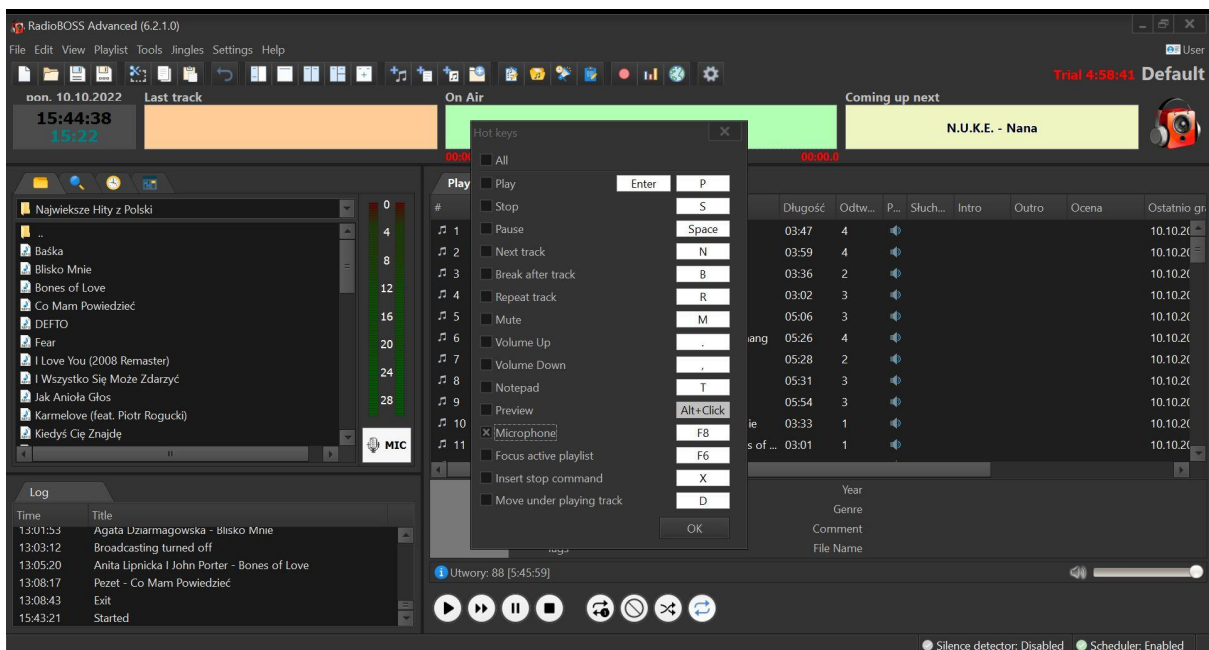
Navigate to File RadioBOSS>

Settings> Hot keys



STEP 3

Assign a key to the Radio Boss function. For example, turning on the microphone with the F8 button



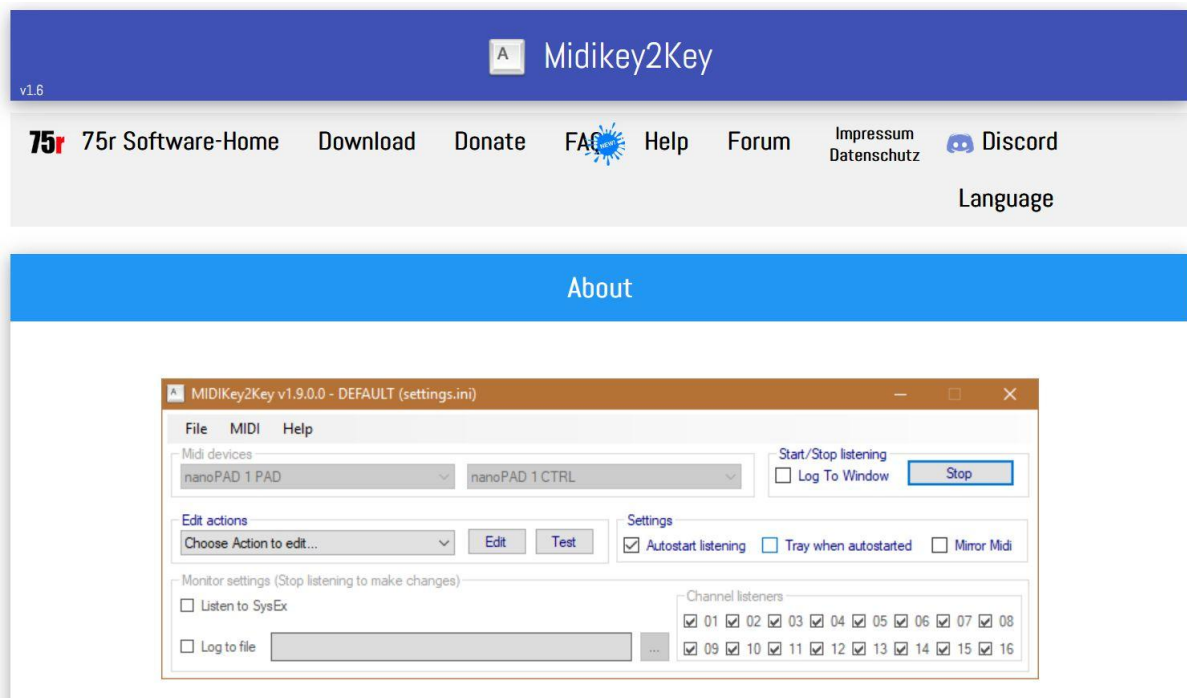
STEP 4

Download, install and open

MIDI Key2Key.

Use link to download here:

<https://midikey2key.de/>

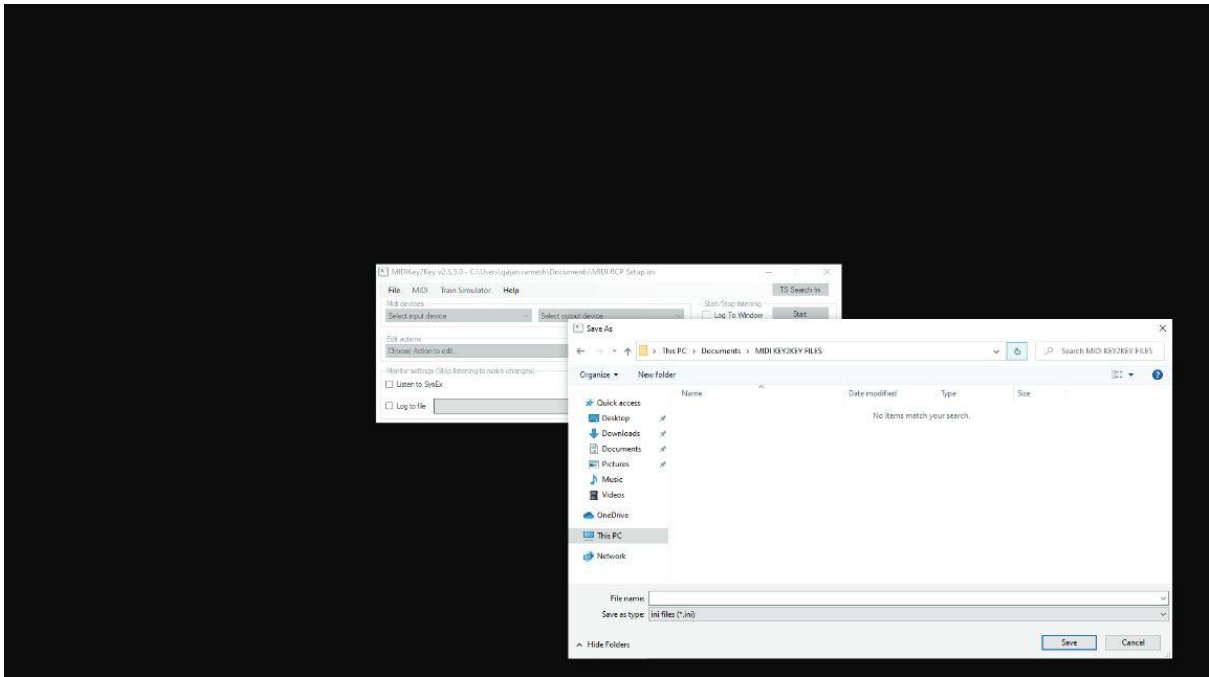


STEP 5

Open MIDI Key2Key,

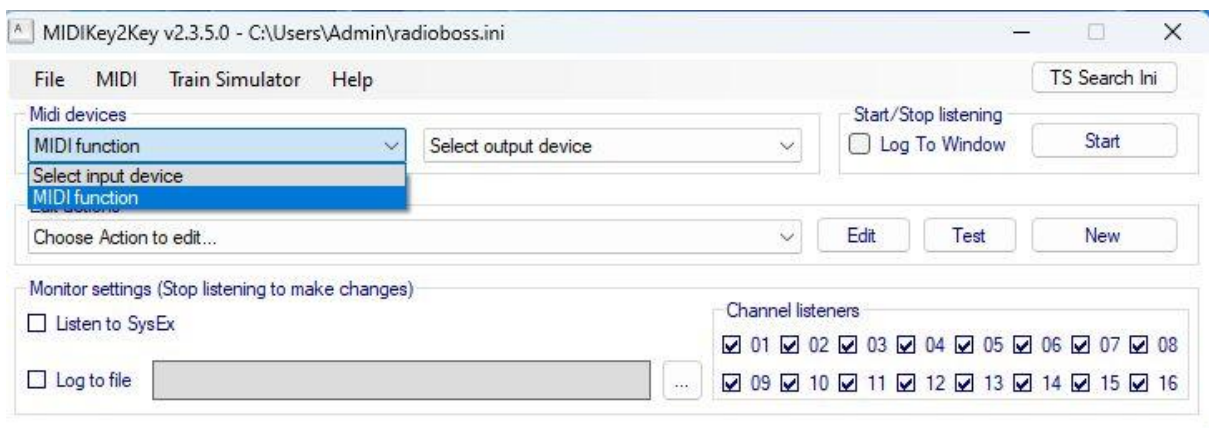
go to File> New and save

your new MIDI setup



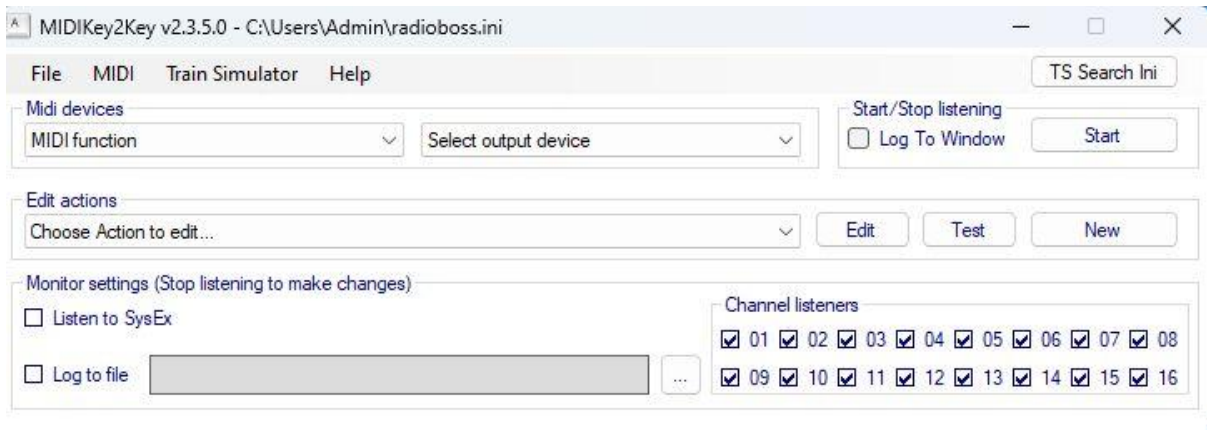
STEP 6

Under 'MIDI Devices' on
the Home screen, select
' MIDI function'
as your input device



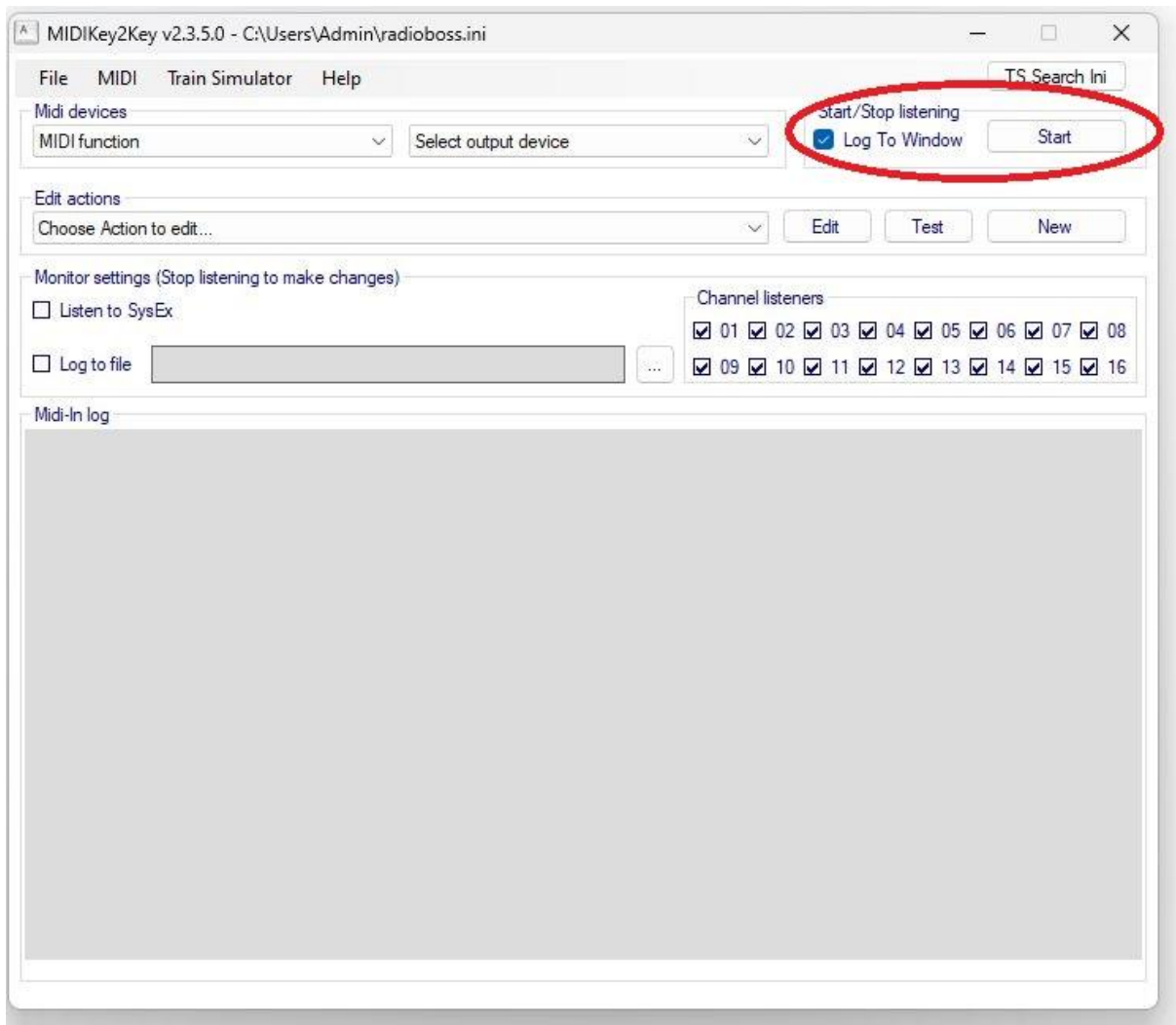
STEP 7

Under the 'Channel
Listeners' section in the
bottom right, ensure that
boxes 1-16 are checked



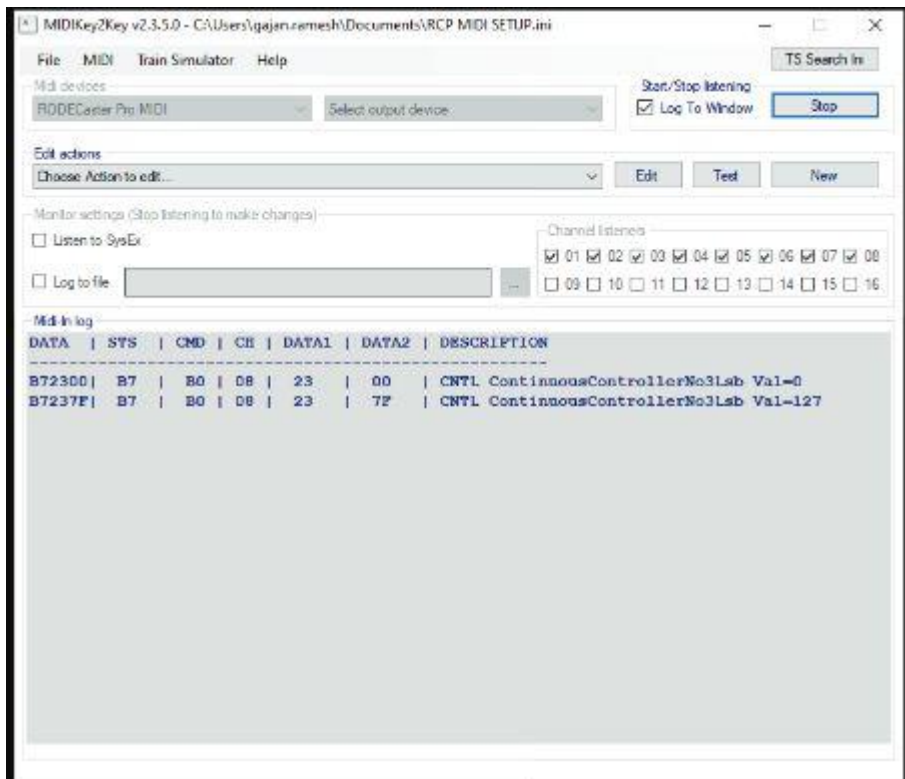
STEP 8

Under the 'Start/Stop
Listening' section, check the
'Log to Window' box and
press the 'Start' button



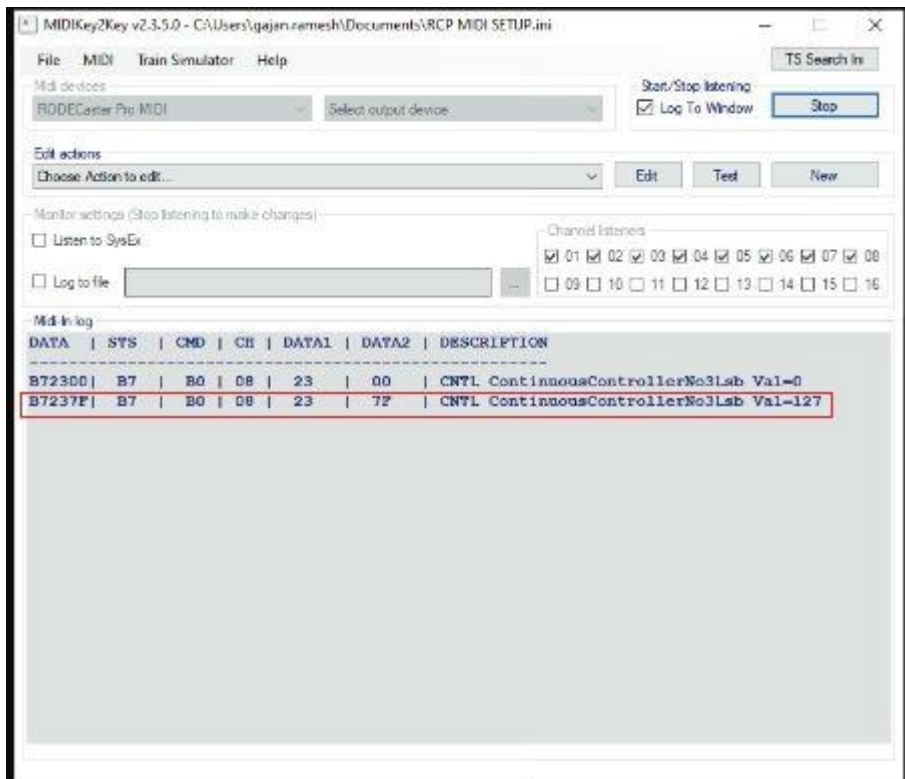
STEP 9

Press the sound pad. Your RODECaster Pro II, with which you would like to control the functions in RadioBOSS, eg turning on the microphone .. You should see the button actions in the "MIDI In-log" window



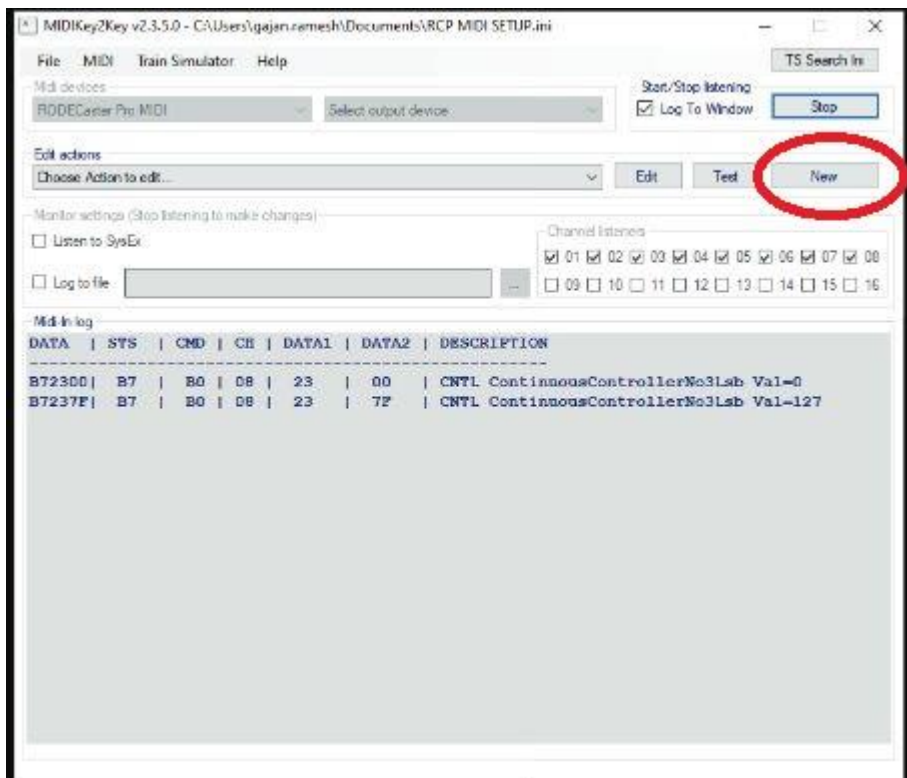
STEP 10

The information will be displayed in the MIDI In-log window when you press the RODECaster Pro II button. You are interested in the line labeled VAL = 127



STEP 11

Now you need to add features to the program. In the "Edit action" line, select the New button.

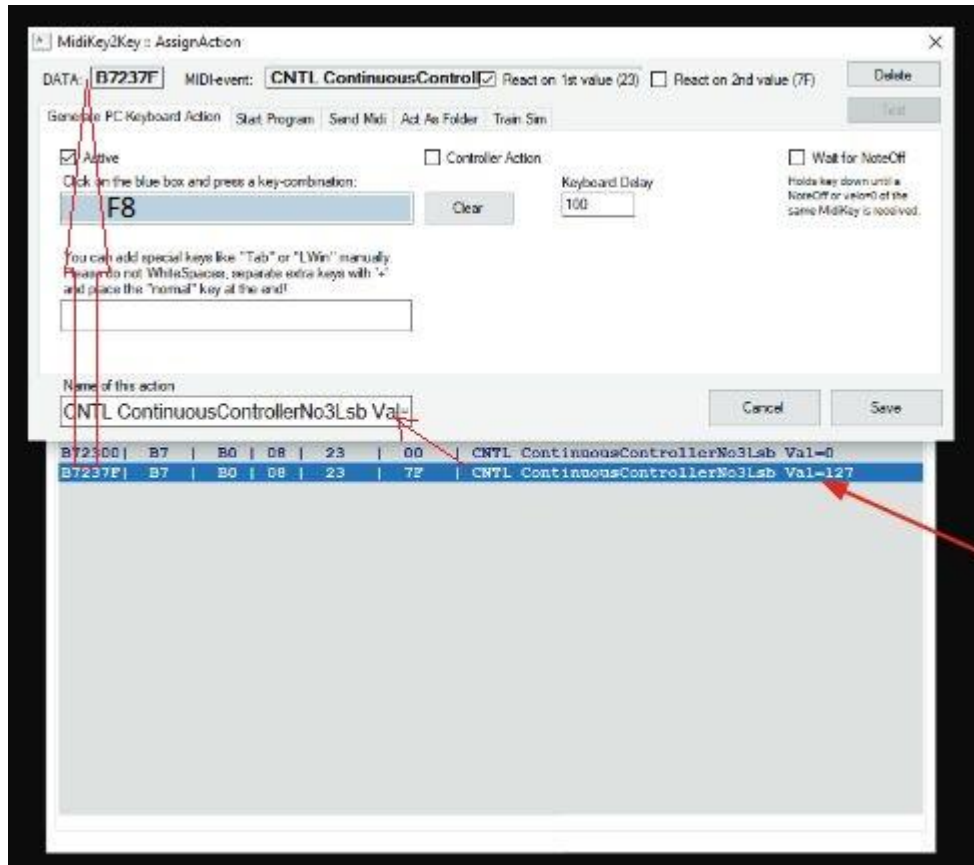


STEP 12

From the Midi-In Log window, rewrite the data to individual places.

DATA, Name of this action.

Here you can also press a button or button combinations on the computer keyboard that are assigned to RadiaBoss. For the microphone, the F8 button is assigned.



The same steps can be repeated for other buttons.